

NEW MEDIASUITE FEATURES AVAILABLE

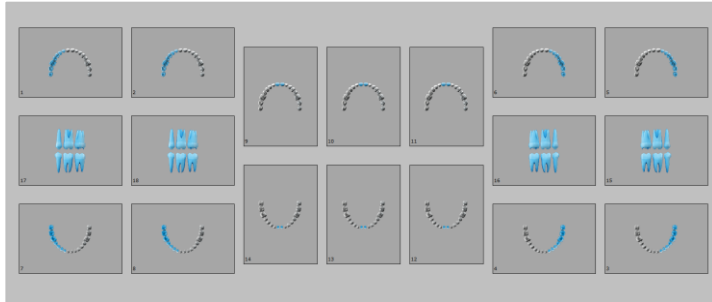
==== BUILD 3.124.00 ====

NEW: New Study templates

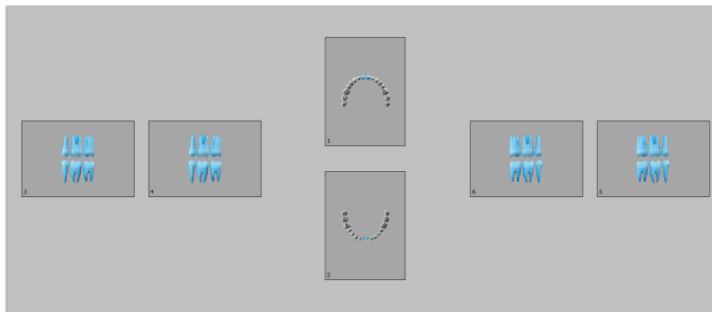
Two new studies templates have been added to this feature to give users more options when using studies templates

Go to: Study...

1. FMX 18 Compact



2. Checkup 7



ENCHANCEMENT: Study templates

An enhancement has been done to 6 of the study templates, where the rotation and the teeth charting automatically apply to the images mounted on the study templates. Each study has its own rotation as per below tables:

| FMX 21. | | |
|------------|----------|-------|
| Position # | Rotation | Chart |
| 1 | 0 | 14,15 |
| 2 | 0 | 12,13 |
| 3 | 0 | 11,21 |
| 4 | 0 | 22,23 |
| 5 | 0 | 24,25 |
| 6 | 180 | 43,44 |
| 7 | 180 | 41,42 |
| 8 | 180 | 31,32 |
| 9 | 180 | 33,34 |
| 10 | 90 | RBW1 |
| 11 | 90 | RBW2 |
| 12 | -90 | LBW1 |

| FMX 18. | | |
|------------|----------|----------|
| Position # | Rotation | Chart |
| 1 | 0 | 12,13,14 |
| 2 | 0 | 11,21 |
| 3 | 0 | 22,23,24 |
| 4 | 180 | 42,43,44 |
| 5 | 180 | 41,31 |
| 6 | 180 | 32,33,34 |
| 7 | 90 | RBW1 |
| 8 | 90 | RBW2 |
| 9 | -90 | LBW1 |
| 10 | -90 | LBW2 |
| 11 | -90 | 24,25,26 |
| 12 | -90 | 26,27,28 |

| FMX 18 Compact | | |
|----------------|----------|----------|
| Position # | Rotation | Chart |
| 1 | 90 | 16,17,18 |
| 2 | 90 | 16,17,18 |
| 3 | -90 | 14,15,16 |
| 4 | -90 | 36,37,38 |
| 5 | -90 | 34,35,36 |
| 6 | -90 | 26,27,28 |
| 7 | 90 | 24,25,26 |
| 8 | 90 | 46,47,48 |
| 9 | 0 | 44,45,46 |
| 10 | 0 | 12,13,14 |
| 11 | 0 | 11,21 |
| 12 | 180 | 22,23,24 |

| | | |
|----|-----|----------|
| 13 | -90 | LBW2 |
| 14 | -90 | 24,25,26 |
| 15 | -90 | 26,27,28 |
| 16 | -90 | 34,35,36 |
| 17 | -90 | 36,37,38 |
| 18 | 90 | 16,17,18 |
| 19 | 90 | 14,15,16 |
| 20 | 90 | 46,47,48 |
| 21 | 90 | 44,45,46 |

| | | |
|----|-----|----------|
| 13 | -90 | 34,35,36 |
| 14 | -90 | 36,37,38 |
| 15 | 90 | 16,17,18 |
| 16 | 90 | 14,15,16 |
| 17 | 90 | 46,47,48 |
| 18 | 90 | 44,45,46 |

| | | |
|----|-----|----------|
| 13 | 180 | 32,33,34 |
| 14 | 180 | 41,31 |
| 15 | -90 | 42,43,44 |
| 16 | -90 | LBW1 |
| 17 | 90 | LBW2 |
| 18 | 90 | RBW1 |

| Checkup 7 | | |
|------------|----------|-------|
| Position # | Rotation | Chart |
| 1 | 0 | 11,21 |
| 2 | 0 | 11,21 |
| 3 | 180 | 41,31 |
| 4 | 90 | RBW1 |
| 5 | 90 | RBW2 |
| 6 | -90 | LBW2 |
| 7 | -90 | LBW1 |

| Checkup 6 | | |
|------------|----------|-------|
| Position # | Rotation | Chart |
| 1 | 0 | 11,21 |
| 2 | 180 | 41,31 |
| 3 | 90 | RBW1 |
| 4 | 90 | RBW2 |
| 5 | -90 | LBW1 |
| 6 | -90 | LBW2 |

| BW 4 | | |
|------------|----------|-------|
| Position # | Rotation | Chart |
| 1 | 90 | RBW1 |
| 2 | 90 | RBW2 |
| 3 | -90 | LBW2 |

ENHANCEMENT: Study

A few enhancements have been added to the Study feature to help users with the capturing and viewing of images.

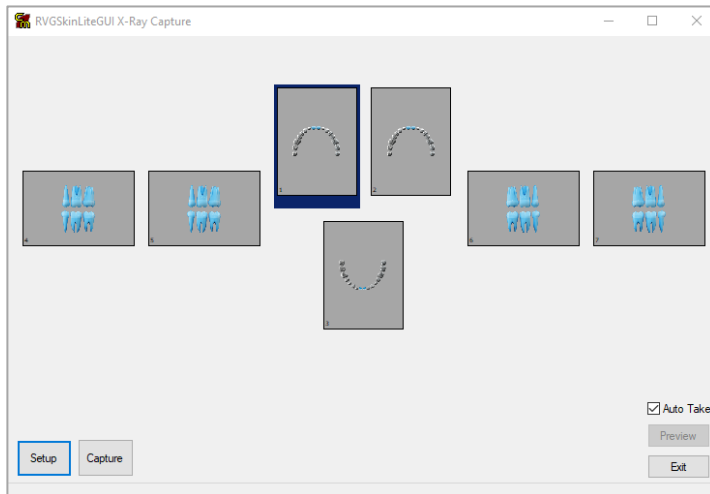
This enhancements are not supported by the CMScan therefore it doesn't support clients on CMS Cloud or Terminal server database

1. Capturing images

New interface while capturing directly into the study templates by MediaRay, MediaRay Plus 2, MediaScan, Schick 2, Owandy, Gendex, and CSH RVG devices has been enhanced to the Study feature.

Go to: Study... > Select a study > Press 'OK'

Click on the device to import the image then press 'Capture'. The images will be displayed in a numerical order from number 1 box from select any box to be the start position.



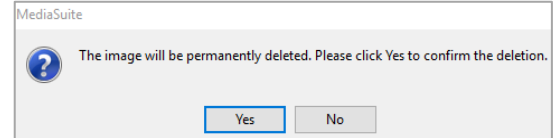
2. Preview images

Straight after capturing an image the preview box will automatically appear. The preview box will stay opened indefinitely, 5, 10 and 20 seconds or until users click on 'Close' or 'Reject image'.



When pressing close the image will be saved in position the previously selected in the Study

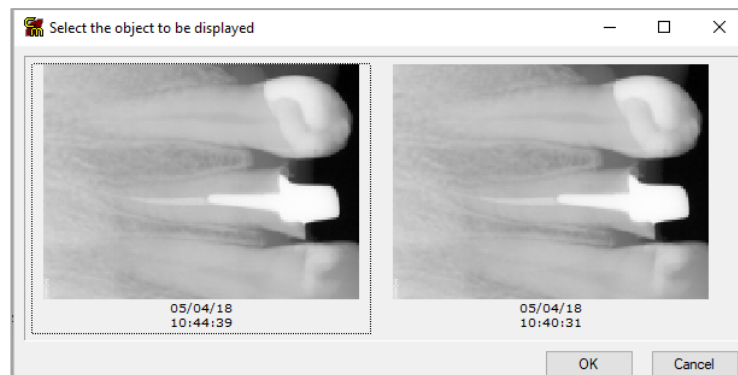
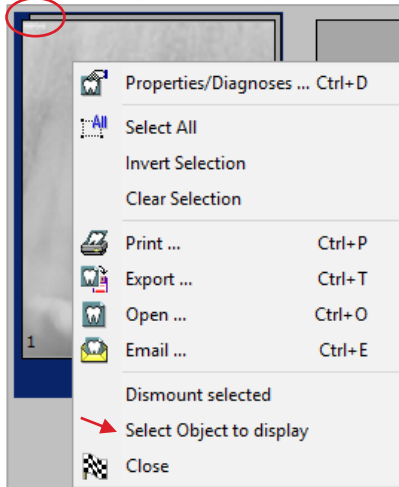
When rejecting an image the below message will appear



Users can preview the last image by pressing 'Preview' in the Stude template after closing the Preview interface box

3. Multiple images mounted

Study template position can have more than one image mounted. The image to view can be selected by a right mouse click and choosing "Select Object to display" option.



NEW: Sirona CBCT capture

Sirona CBCT capture functionality has been added to CMS

Prerequisites to capture 3D images:

- a. Sidexis installed and fully functional
- b. CMS 3D installed and fully functional
- c. Requires setup in the CMS to be outlined in a separate document

The 3D image is acquired by Sidexis, and then it is passed to the CMS 3D straight from the Sidexis interface.

