

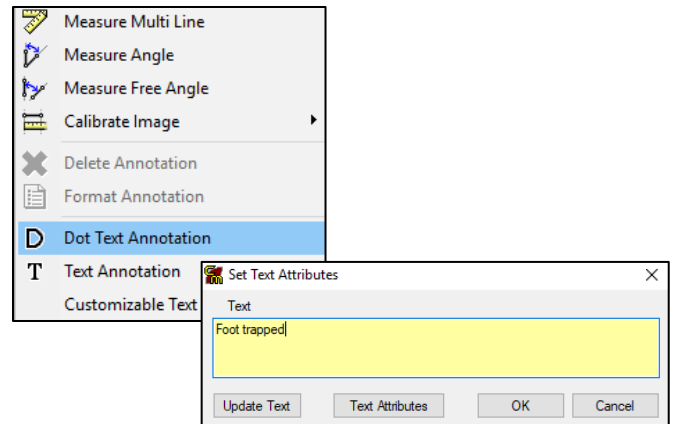
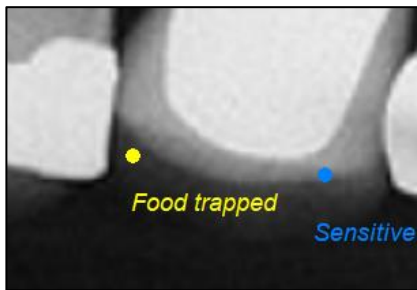
NEW Mediasuite FEATURES AVAILABLE

Build 3.118 release date after 25/09/2017

NEW: 'Dot' Text Annotation

New "Dot" annotation to mark the points of interest with visible colour "dots" have been implement to Mediasuite (CMS).

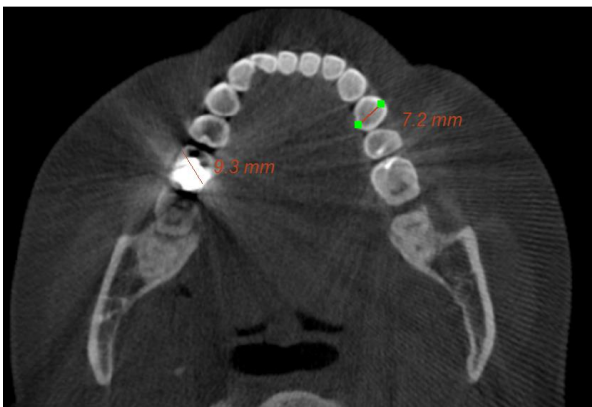
1. Right Click on the Image
2. Click on 'Dot Text Annotation'
3. Click on area to add the text
4. Write the annotation text
5. Click on 'Update Text' and 'Text Attributes' if required



You can drag the annotation to the position where you want to see the notes

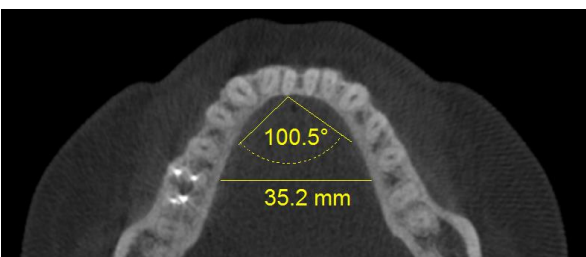
NEW: 'Native' export of the 'Ruler' annotation on the screenshots from the CMS 3D

When exporting an image with measurements from CMS 3D the measurements into CMS is now accurate



NEW: Measure length and angle

When a screenshot is exported from CMS 3D to Mediasuite the length and angle can measure exactly as you would in the CMS 3D



ENHANCEMENT: Mediaray Plus

Mediaray Plus 2 interface has been enhanced to detect the type of Mediaray Plus sensor that is connected and automatically select the appropriate set of the image filters.

ENHANCEMENT: Video capture

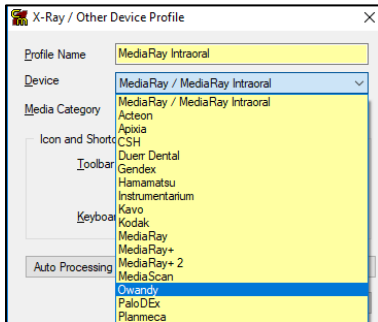
These changes with the video capture will occur when the upgrade is performed.

- The video capture interface window when using mode 3 and font size 125% is now displayed correctly
- The size and position of the video capture interface in modes 2 and 3 are now retained
- The size and position of the video capture interface on secondary monitor for modes 2 and 3 are now retained
- Video capture mode 3 starts by default at maximum resolution available, and then keeps the selected resolution if it's been changed

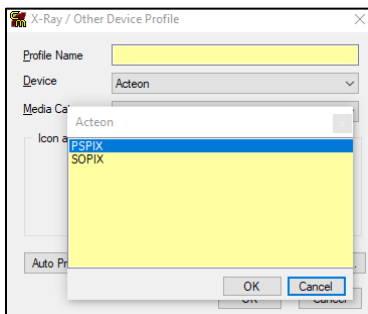
ENHANCEMENT: Imaging devices

The following devices have been added to the Mediasuite device setup interface. Please contact Centaur support for activation.

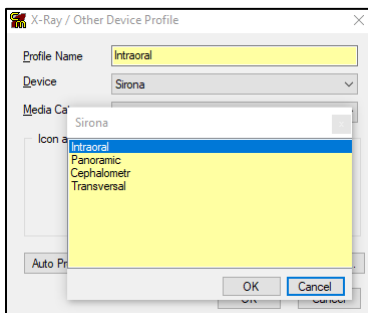
- **Owandy Intraoral sensors' family**



- **Acteon imaging devices: PSPiX and SopiX**



- **Sirona Imaging devices: Intraoral sensor and OPG**

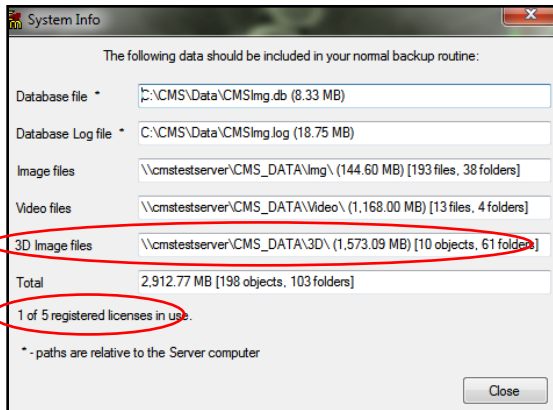


- **Schick 33 sensor:** Sirona XIOS XG Supreme
The Schick 33 sensor (Sirona XIOS XG Supreme) including the dedicated filters is working in Schick 2 interface

NEW: System info changes

Help menu > System info

- **3D data**
The 3D data has been added to the System info to help the practices with their backup
- **License**
The number of license has been added to the System Info



ENHANCEMENT: Changes of patients and providers

When the patient and/or provider is changed in Dental4Windows, Mediasuite automatically changes to newly selected patient and/or provider. This will eliminate the possibility of saving images in the wrong patients Mediasuite file.