

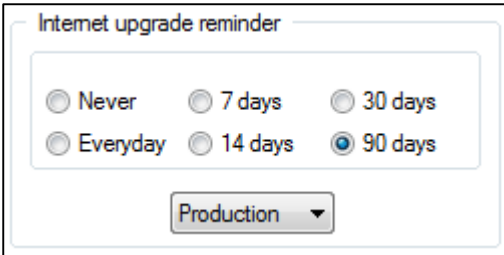
NEW Mediasuite FEATURES AVAILABLE

==== BUILD 3.095 Release Date: 27/06/2016 ====

NEW FEATURE: Internet Upgrade

Internet Upgrading is now available for Centaur Media Suite (CMS). Upon start-up the program will prompt to check for an available upgrade. Internet Upgrade reminder preferences can be configured via the following:

- Go To menu > Preferences > Application tab > Internet Upgrade Reminder



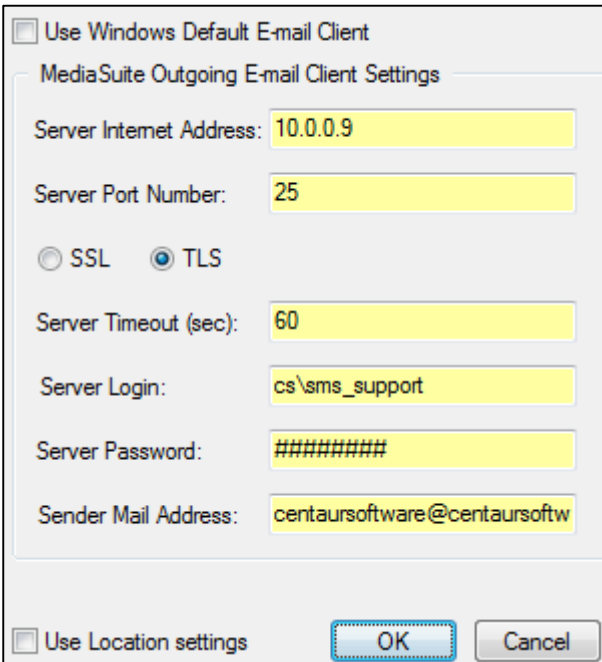
The screenshot shows a dialog box titled "Internet upgrade reminder". It contains five radio button options: "Never", "7 days", "30 days", "Everyday", and "90 days". The "90 days" option is selected. Below the radio buttons is a dropdown menu currently set to "Production".

The Internet Upgrade process will eliminate the use of a CD-ROM in order to upgrade the version of CMS.

NEW FEATURE: Email via the SMTP Email Server

Media can now be emailed from CMS without using an external email client such as Microsoft Outlook. A new button is available within the preferences of CMS, allowing you to configure your email settings.

- Go To menu > Preferences > Application tab > E-mail Settings



The screenshot shows a dialog box titled "MediaSuite Outgoing E-mail Client Settings". It has a checkbox for "Use Windows Default E-mail Client" which is unchecked. Below this are several input fields: "Server Internet Address" (10.0.0.9), "Server Port Number" (25), "Server Timeout (sec)" (60), "Server Login" (cs\sms_support), "Server Password" (masked with #), and "Sender Mail Address" (centaursoftware@centaursoftw). There are radio buttons for "SSL" and "TLS", with "TLS" selected. At the bottom, there is a checkbox for "Use Location settings" which is unchecked, and "OK" and "Cancel" buttons.

Place a tick in the option 'Use Windows Default E-mail Client' if you wish to use the default installed mail client (e.g. Outlook).

It is possible to setup these email settings for all PC's using the CMS database. In order to complete this, the 'E-mail Settings' must be configured in 'Administration' mode. Once the settings are configured in Administration mode, you can place a tick in the option 'Use Location settings'. If you want the PC to operate separately to other PC's then do not tick this option.

NEW FEATURE: Device Groups Sorted Alphabetically

All devices found in the X-Ray/Other tab within Device Setup will now be sorted alphabetically. In order to view the list of devices, follow the steps below.

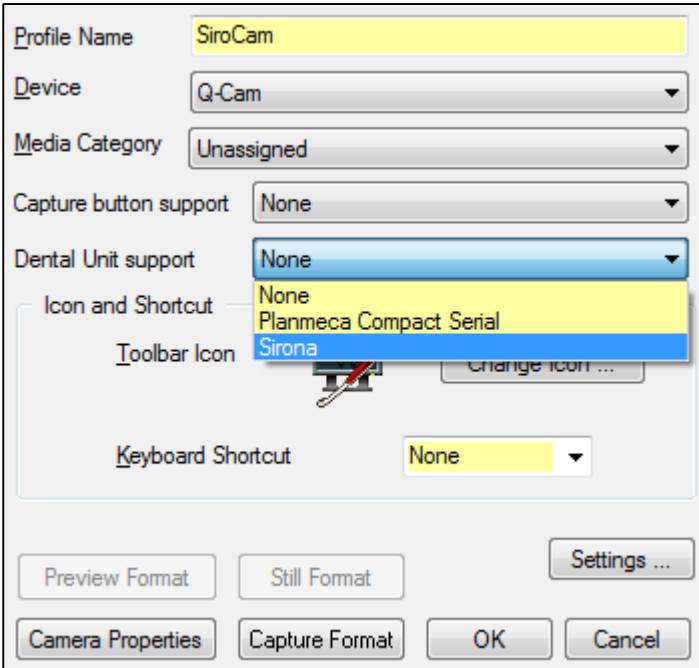
1. Capture menu > Setup (Advanced)
2. Enter password (current date in short form)
3. Click on X-Ray/Other tab to view device list

NEW FEATURE: Interface to Sirona Dental Unit

When setting up an intra-oral camera within CMS, it is possible to configure the capture to be initiated by a Sirona foot pedal. The CMS video capture interface will start-up automatically once the camera is taken from the holder and will close once it is placed back in the holder.

In order to activate this functionality, follow the steps outlined below:

1. Capture menu > Setup (Advanced)
2. Enter password (current date in short form)
3. Click on Video tab and click 'Add'
4. Select and fill out necessary information regarding device
5. Ensure you select 'Sirona' from the option 'Dental Unit Support'



Profile Name: SiroCam

Device: Q-Cam

Media Category: Unassigned

Capture button support: None

Dental Unit support: None (dropdown menu open showing: None, Planmeca Compact Serial, Sirona)

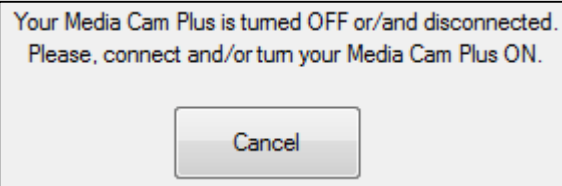
Icon and Shortcut: Sirona

Keyboard Shortcut: None

Buttons: Preview Format, Still Format, Settings ..., Camera Properties, Capture Format, OK, Cancel

NEW FEATURE: Automatic Detection of the Video Device Connection

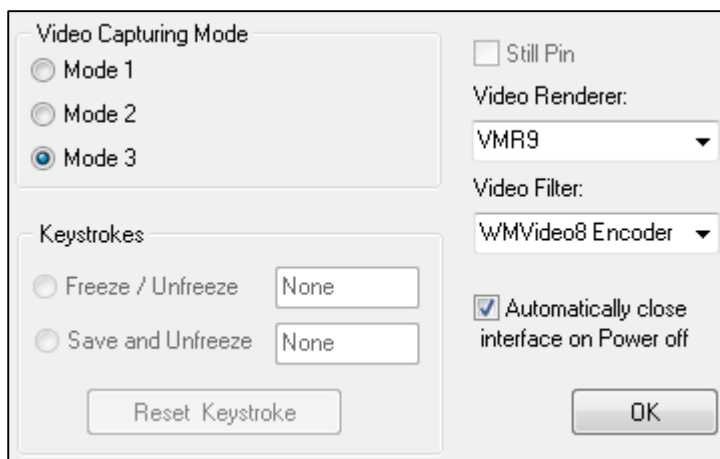
If a user tries to start a capture with a video device and it's not connected, a 'not connected' message will appear onscreen. Once the camera is connected to the PC the message will automatically disappear and the video capture interface will open, alternatively the user can click the 'Cancel' button to quit the process.



NEW FEATURE: Video Capture Interface Closed Automatically

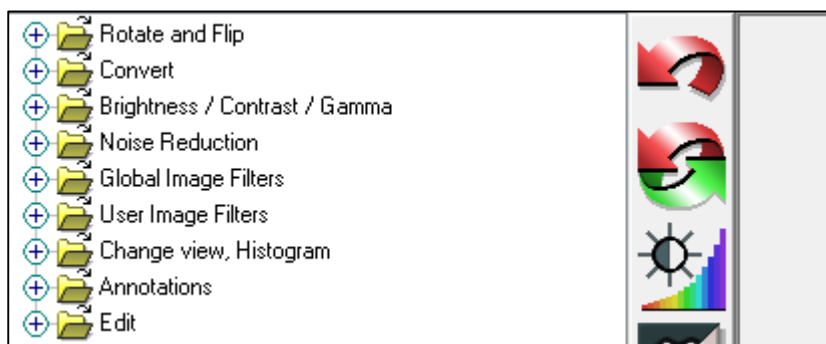
A video device can now be configured to have its interface closed automatically once powered off or placed back into a holder. The setting is configured underneath the video device profile, follow the steps below to set it up.

1. Capture menu > Setup (Advanced)
2. Enter password (current date in short form)
3. Click on Video tab and click 'Add'
4. Select and fill out necessary information regarding device
5. Click on the 'Settings' button
6. Select 'Mode 3/Mode 2' and place a tick in 'Automatically close interface on Power off'



NEW FEATURE: Customisable Toolbar

The toolbar within CMS can now be customised to include or hide specific toolbar shortcuts. In order to customise the toolbar, access the 'View' menu and select 'Customize Toolbar'.



Tools and annotations for convenience are grouped as follows:

- Rotate and Flip**
 - Rotate Left

- Rotate Right
- Rotate by 180°
- Rotate by a degree
- Flip Horizontally
- Flip Vertically
- Convert**
 - Crop Image
 - Convert to 8 bit
 - Convert to greyscale
 - Positive / Negative
- Brightness / Contrast / Gamma**
 - Brightness / Contrast /Gamma
 - Auto Contrast
 - Auto Equalize Image
- Noise Reduction**
 - Noise Reduction
 - Median
 - Despeckle
 - Sharp
 - Smooth
- Global Image Filters**
 - Filter A
 - Filter B
 - Filter C
 - Filter D
 - Filter E
 - Filter F
- User Image Filters**
 - Filter 1
 - Filter 2
 - Filter 3
 - Filter 4
- Change view, Histogram**
 - Emboss
 - Colourise
 - Isodensity
 - Histogram
- Annotations**
 - Measure Annotations
 - Measure Multi Line
 - Measure Angle
 - Measure Free Angle
 - Calibrate Image
 - Calibrate Image by Line
 - Calibrate Image by Polyline
 - Calibrate Image by resolution
 - Annotations
 - Text Annotation
 - Customizable Text Annotations
 - Text 1
 - Text 2
 - Text 3
 - Text 4

- Free Hand
- Polyline
- Rectangle
- Ellipse
- Arrow
- Magnify Region
- Format Annotation
- Delete Annotation
- Show/Hide Annotations
- Edit**
 - Restore Original Image
 - Undo Last Action
 - Redo Last Action
 - Undo / Redo

The left-hand side of the screen displays the tools mentioned above and the right-hand side displays the toolbar. You can add a tool to the right-hand side toolbar either by double-clicking on the tool or using drag and drop. In order to add multiple tools to the toolbar, use the 'Ctrl' or 'Shift' key to select them and then right-click on the toolbar to select the option 'Add selected actions to toolbar'.

In order to delete a tool from the bar, right-click on the tool and select the option 'Delete button'.

If the toolbar has been customised in the 'Administration' mode, it will be visible for all providers at the current location. A provider can choose whether they want to use their own toolbar or the 'Global' one.

This is achieved by following the steps below:

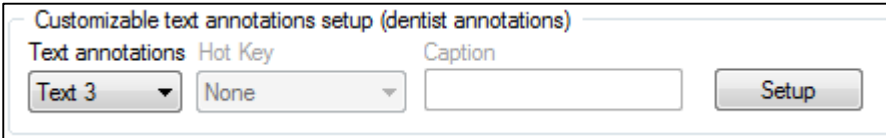
1. Go To menu > Preferences
2. Application tab > place a tick 'Use Toolbar Global Settings'

NEW FEATURE: User Defined Text Annotation Tools

There are four new tools to create user defined text annotations. This allows for text annotations to be created once but used numerous times without needing to create again.

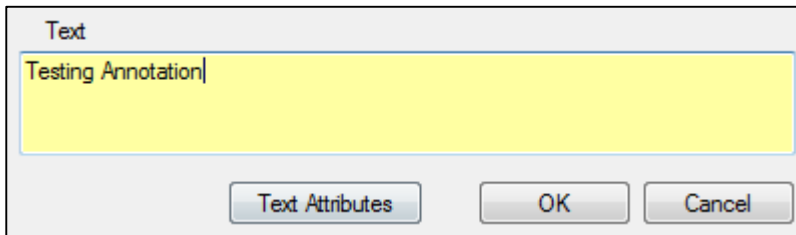
In order to create custom text annotations, follow the steps outlined below:

1. Go To menu > Preferences
2. Tools tab > Customizable text annotations setup (dentist annotations)
3. Select the annotation template from 'Text annotations'
4. Click on the 'Setup' button

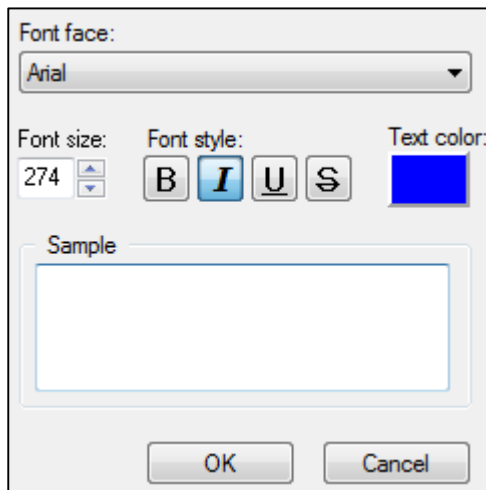


Text annotations	Hot Key	Caption
Text 3	None	

5. Write the annotation



6. Press the 'Text Attributes' button to change font, size and colour



In order to use the text annotation on an image within CMS, follow the steps below:

1. Tools menu > Annotations > Customisable Text Annotations > select from the list
2. Left-click the area on the image where you wish to place the annotation

If you want to change the annotation properties when placing it onto an image, hold the 'Shift' key and left mouse click once. The 'Set Text Attributes' box will appear on screen, allowing you to change its properties.